



**ANGLICAN CARE
WAIAPU**

PATHWAYS FORWARD
October to November 2011

AT A GLANCE

[Arohaina](#)
[CHBWAC](#)
[St. Matthew's ECC](#)
[After School @ St. Luke's](#)
[THWAC](#)
[Dannevirke Family](#)
[Services](#)
[Papamoa Support Centre](#)
[Careforce SHB](#)
[SFWAC](#)
[Excellence Awards](#)
[Service Awards](#)
[Volunteer Audits](#)

We have an amazing collection of highlights from our services! Thanks to everyone for their contributions.

Important information about our annual Excellence and Service awards included in this newsletter.

Rhonda Poon from the Napier Office is a big GOOGLE fan!

"I've just discovered

FEATURED

From Erika

Where has the time gone since our last issue of Pathways Forward? It certainly has been going at a hiss and a roar pace and I find myself pondering about all the wonderful things being achieved and what is still ahead. World Cup fever has even managed to make its way into the Hunt family and WASSTB Office!

The Senior Management team did manage to take some time out at Titoki Healing Centre in Whakatane in June to reconnect and refocus on the bigger picture and the WASSTB strategy. The programme challenged us to think outside the square and work as a team to solve incredibly hard projects. The pictures tell a much better story as we learnt to create a catapult and catching device which actually had to work, somehow get a ping pong ball out of a pipe into another holding device - without stepping inside the perimeter...the sun was setting...but we did it. The ideas flow and the perseverance is strong - key attributes of the senior management team.

And of course it is with fondness and incredible memories we farewell Liz Pennington (CEO) onto bigger and brighter things where we know she will certainly stamp her mark and do more amazing things. Of course this leaves a massive hole in our hearts but also our structure - cause wasn't she fantastic how she juggled so many balls (my juggling talents are certainly not as clever!). But let me assure you all that in the interim Jane Roberts our Finance Manager and myself will continue to lead with the same passion and capability in order to support each and every one of you to do your job so well. My door is always open and I encourage all of you to keep focussed and support each other.

Erika Hunt

WHAT'S NEW

Arohaina Centre for Seniors

30 years of a "Special Place" Arohaina Centre for Seniors celebrated its 30th Anniversary celebrations with a Thanksgiving Service Sunday 11

that I can access my work emails from home through my Google Apps sign in - as well as all the Google Docs that Jill and I share. This is fantastic."
Thanks Rhondda



GOOGLE DOCS

Our Administration and Financial manuals, the Orientation book and the Annual Business Plan are all loaded onto Google Docs. If you need help accessing these documents and policies please contact Bron on 06 8339104 or email bron@waswb.com

CLOSER TOGETHER WHAKATATA MAI

Do you still have a Whakatata Mai post card sitting on your desk or in a pile of things to do? PLEASE take a few minutes to fill it out and pop in the post. We would like our services to show their support of reducing inequalities in New Zealand. Check out their website

www.whakatatamai.org.nz/

September. Arohaina - which translates as "love in action" was born through a generous gift of land from a Gisborne person from which the sale proceeds enabled the 11 unit homes and a community centre to be built. The Gisborne Civic band entertained for half an hour before the service and played for the hymns during the service. There was opportunity for folk to share experiences of their time at Arohaina, poems were read and the singing was amazing. We were delighted to have Bishop David Rice join us along with other clergy from the Diocese and Erika Hunt from Napier Office. Other local dignitaries who joined with us included the Mayor and Deputy Mayor of the City. Over 100 clients, family, friends and supports, and enjoyed afternoon tea which was also a great time to catch up and reminisce over times past.

Miriam Swarbrick

[top of page](#)



Central Hawke's Bay Whanau Aroha Centre

We have had the privilege of Matua Hunia writing a song for the Whānau Aroha Centre with the help of Leo and Harriet with Maori translation (Te Roopu). This was unveiled at the end of Sept. Here is a photo of the children with their hands cupped into a heart shape salute.

Matua Hunia and Whaea Celia have completed the first part of their Oscar papers with distinction.

Louise Ward

[top of page](#)



St. Matthew's Early Childhood Centre

In February of this year St Matthew's Early Childhood Centre in Hastings signed a three year contract with Core Education to participate in Professional Development alongside other childcare centres in the region to extend "Literacy and Numeracy". The teachers have all been involved in bi-monthly cluster workshops in the evening where we discuss what has been happening in our centre and learn new ideas to take back, we have also attended Saturday workshops focusing on valuing identity, language and culture. During term three we were proud to have our work acknowledged by Core Education when we produced a powerpoint presentation to demonstrate the work that has been happening in the centre. We shared this powerpoint at a cluster workshop and impressed the facilitator and organisation who have now uploaded it to their website to share with other early childhood professionals. As our year is coming to an end we can reflect on what learning has been achieved and look forward to more quality education for our teachers and children in the year to come.

Our presentation can be viewed by visiting <http://www.eceonline.core-ed.org/> and searching St Matthews Early Childhood Centre.

Rayna Wallace

[top of page](#)



St. Luke's Holiday Programme

We operate a holiday care programme in the first week of the holidays Oct 10 to 14 for primary school children. All are welcome to register St Luke's Holidays

Lost sheep? Good Shepherd!

October 10–14 2011 first week of holidays

8am-4.30pm \$25 a day [Bring lunch and togs *every day*]

[top of page](#)



Te Hapara Whanau Aroha Centre

Here is a powerpoint presentation inclusive of an index (short explanation list) of the really neat programmes the Whanau Team & Mothers have been doing here at Te Hapara Whanau Aroha.

Cathi Teller

[top of page](#)

[View here](#)

Dannevirke Family Services

Dannevirke Family Services celebrated with a great article in their recent paper.



Papamoa Community Support Centre

Papamoa Community Support Centre recently celebrated their first anniversary at their new location at Hartford Road, Papamoa.

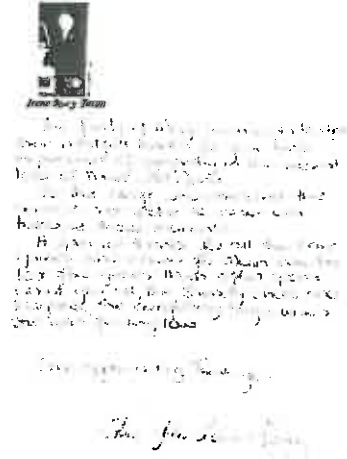
Reverend Arthur Bruce wrote this amazing poem to capture the history of

the centre so far. Read it on our website.

[top of page](#)

Careforce Southern Hawkes Bay

Careforce Southern Hawkes Bay received this touching letter from the family of a client who recently passed away.



St. Francis Whanau Aroha Centre

Ten years ago a partnership was formed between the Ministry of Education and the Waiapu Anglican Social Services Trust Board and St Francis Whanau Aroha Early Childhood and Family Support Centre became a reality.

On July 14th an open day was held at St Francis with invitations extended to past and present management, staff, children, families and local supportive organisations.

The weather was terrible but the turnout of visitors was wonderful with lots of memories shared. We were thrilled to have The Reverend Dorothy Brooker with us, along with representatives from the Trust Board and other Anglican Social Services.

Jo, who was the original Centre Manager, travelled from Melbourne, and Paulette, who was the first Family Support Worker, were both able to be here as well.

A very successful celebration and thank you to everyone who has supported us on our ten year journey to where we are today.

Picture 1: The Reverend Dorothy Brooker with original staff and management

Picture 2: The Gifkins family have been enrolled since the Centre opened and still have 2 children attending today

[top of page](#)





Nominations for Excellence Awards

Nominations are sought for the Annual Excellence Awards. A copy of the form has been sent to the Senior Team and will have been forwarded on to services. Nominations for Excellence should be forwarded to socialservices@wasstb.com by 24th October. If you do not have a copy of the form please contact Lois/Linda at socialservices@wasstb.com

Service Awards

We require names for the Annual Service Awards. Please forward names of staff (including caregivers and educators) volunteers, management committee members. These are given for 5, 10 15, etc years of service. The names and number of years for the people who are to receive the certificate are required back to socialservices@wasstb.com no later than 18th November, so that they can be sent to the printer.

Annual Audit of Volunteers

Services are asked to forward a list of volunteers from their service so that we can check that we have police checks for all volunteers.

[top of page](#)

Thankyou for your time spent reading
PATHWAYS FORWARD

This message was sent to trish@waiapu.com from:

Anglican Administration Centre | 2 Bower Street | Napier, Hawkes Bay 4110, New Zealand

Manage Your Subscription

Email Marketing by
Contact
by a tree